

Performance Insight for the Mission-Critical Applications that Drive your Business

Solution Overview

SeaView performance monitoring solution delivers the ability to measure, monitor, and analyze the key metrics of actual business transactions in real-time. SeaNet is the first company to actually deliver on the business requirement to understand the root causes of performance problems with mission-critical applications. Many companies have promised over the years to deliver on this requirement but SeaView performance monitoring separates from all others by delivering all of the granular performance metrics but doing this for all application users, all the time, and making it possible for the first time to understand these performance details within the context of the actual business “units of work”.

The SeaView solution suite is made up of three components: SeaView/RTM™ which collects all transaction data, SeaView/PDB™ which assembles all transaction analysis into a historical repository for detailed historical analysis and, SeaView/VAC™ which makes detailed visualization and multi-dimensional analysis possible on both the real-time monitoring of RTM or the historical data-store of PDB. Working in concert, these three pillars of the SeaView performance monitoring suite provide large enterprise and service provides unprecedented performance details for today’s complex multi-tiered, mission-critical applications.

SeaView successfully bridges the divide between real and perceived end- user response time with multi-dimensional mining of all granular data over-time. Using the SeaView Performance Solution Suite, it is technically and economically feasible to monitor all transactions on all servers and for all users that demand optimum performance of your mission critical applications.

SeaNet’s Unique Capabilities

- **End to End Performance Measurement**

SeaNet delivers a unique solution that measures end-to-end application performance from a passive server-side monitor. Data granularity in micro-seconds, round-trip-time as well as one-way latency is provided from this solution.

- **“Always On” Data Collection**

SeaNet is the first company to combine detailed monitoring and analysis with the “always on” monitoring of 24X7 packet capture. This allows for a complete understanding of all end user transaction and not just a small sample of the total.

- **Diagnose Any Protocol or Application Tier**

There is *no* protocol whether standard or custom that the SeaNet’s solution cannot diagnose. SeaNet uses our unique RapidAdaptation™ capability to quickly adapt all of our diagnostic capabilities to any application situation. SeaView also makes it possible to focus on any tier within the application deployment architecture providing unique performance insight unavailable before now.

- **Understand the Business Context**

SeaNet’s most compelling value is the ability to see deeper than the network layer data, into the business data and the business “units of work” that indicate the real usage behavior of the end user. By providing this business context with the granular performance data, SeaNet is the first company to provide a “bridge” between the operations teams that monitor performance and the application support teams that strive to provide business value with enterprise applications .

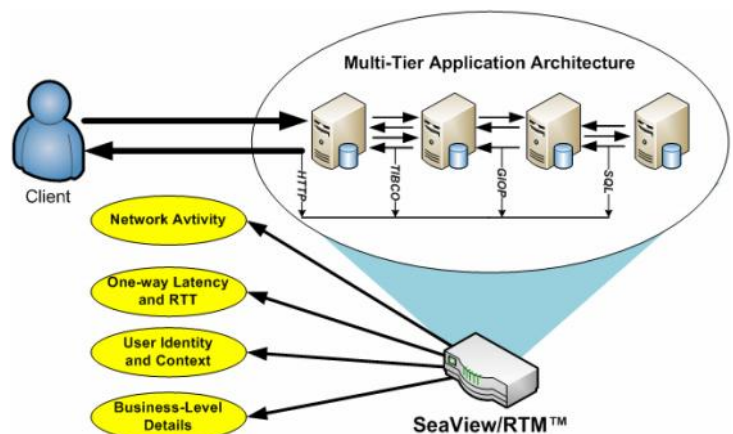


Figure 1: End-to-End Performance Measurement

SeaView Solution Highlights

- Centrally deployed passive probe installed as an appliance.
- Agent-less solution allows rapid deployment and requires minimal configuration.
- Actual—not synthetic—network and application performance statistics are captured and analyzed in real-time.
- Continuous auto-discovery of application topology.
- End-to-end measurements for all IP-based applications, including TCP and UDP from all users.
- Comprehensive alerts and alarms for all types of performance exceptions regardless of the granularity
- Enterprise Framework Performance Integration
- Multi-dimensional Visualization of node and transaction performance metrics
- Customized reporting of real-time and historical performance data
- Centralized administration through the SeaView Console

SeaView/PDB™ Deployment and Interfaces

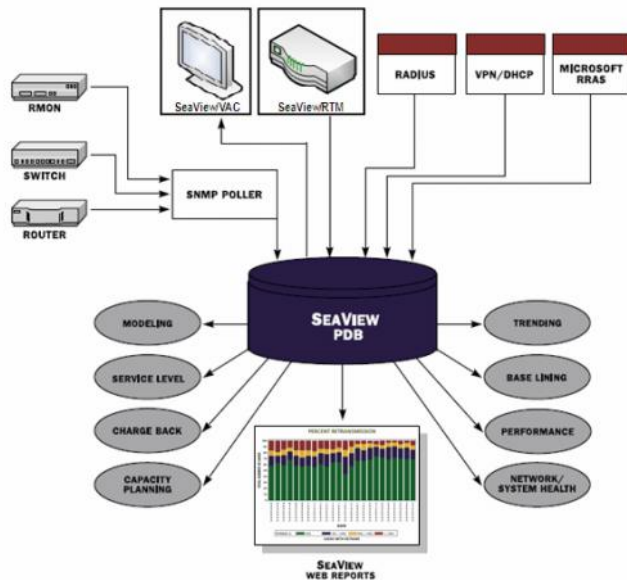


Figure 3: SeaView/PDB Deployment

SeaView/RTM™ Deployment and Interfaces

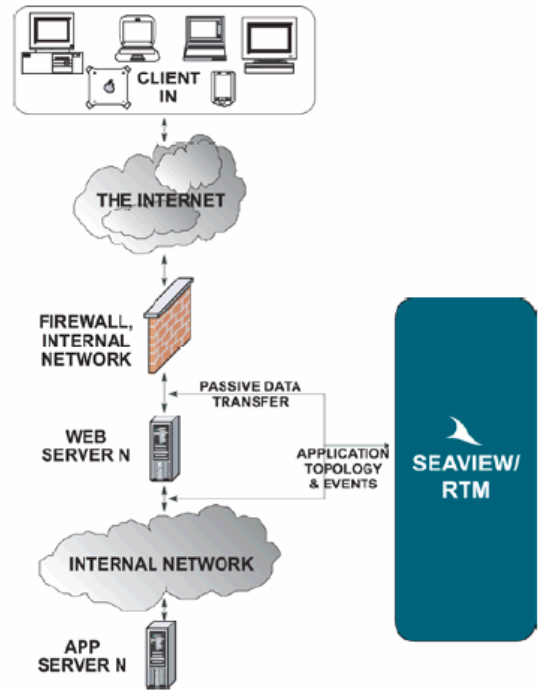


Figure 4: SeaView/RTM Deployment

SeaView/VAC™ Screen Shots

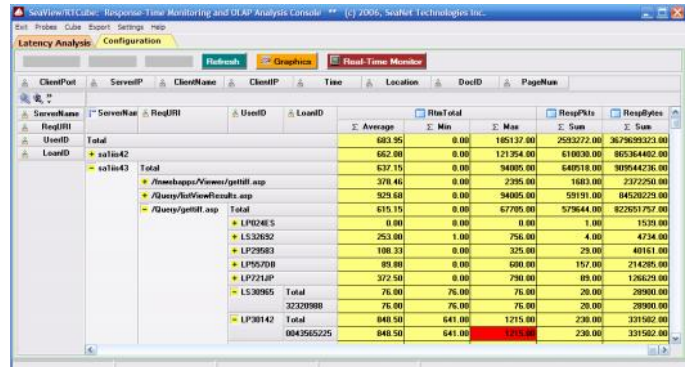


Figure 4: Transaction Performance Details

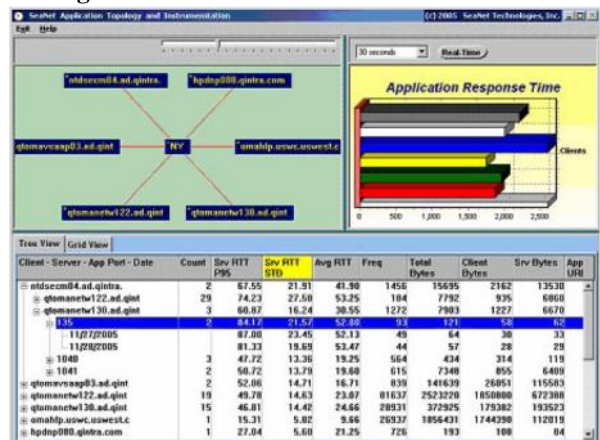


Figure 5: Topology and Performance Views

SeaView Component Details

SeaView/RTM™ Response-Time Monitor

- Server-Side Passive Probe
- Micro-second granularity of all measurements
 - Network round trip time
 - One-Way Latency
 - Server response time
 - Client response time
 - Server data transfer time
 - Packet and byte Retransmissions
 - Retransmission delays
 - TCP session statistics
 - Session byte and packet counts
- Continuous auto discovery of application topology
- HTTP transactions
- SQL transactions
- RapidAdaptation™ for custom application monitoring
- Highly scalable
- Merged Analysis from multiple RTM Probes
- Configurable alerting on any data element on the session/application or client/server level
- Element (“raw”) thresholds

SeaView/VAC™ Visualization and Analysis Console

- N-dimensional OLAP Cube Analysis system
- Visualization and Analysis of Real Time and Historical Data
- Dynamic, user-directed monitoring perspectives – server, client, network, etc.
- Monitor of Custom attribute or transaction element of a customized application
- Value-added alarms comprised of multiple monitored elements within the “analysis cube”
- Enhanced productivity user interface tools including “column sort” and “drag-and-drop”
- Visual alarms of thresholds and critical underlying performance problems
- Understand the transactions that are underneath your business transactions and other units of work

SeaView/PDB™ Performance Database

- Data repository and correlation engine optimized for the processing of highly granular data
- Complete published data dictionary
- Import of external measurement sources
- Mapped data are merged with network metadata
 - Dynamic IP with real address
 - User ID correlated with authentication server
- Online Analytical Processing (OLAP) analysis
 - millions of rows
 - varied time intervals
 - near real-time
- Distributions and standard deviations instead of just relying on averages
- Highly flexible reporting allows interaction with complex multidimensional data to produce tabular and graphical reports in near real-time
- Numerous instructional reports that are easily customized by the user

About SeaNet Technologies

SeaNet Technologies is one of today’s leading providers of application performance monitoring solutions for high-performance custom applications. SeaNet delivers a comprehensive toolset to support the measurement and analysis of the end to end response times with business transaction context. SeaNet uniquely empowers large enterprises to bridge the divide between the technical and business units responsible for delivering high network and application quality of service levels. Our products have been successfully deployed in multiple Fortune 100 enterprise environments.

SeaNet Technologies is headquartered in New York City. For more information, please contact the company at 718-544-1778 or visit the website at www.seanet-tech.com.

*SeaNet Empowers Technical
and Business Units to Cooperatively
Ensure Consistent Application
Response Times*